

From the Desk of the Executive Director

Dear Community,

It is an honor to address you and welcome you to a new edition of ECOS, our quarterly newsletter. This space not only seeks to keep you informed, but also to accompany you in the formative journey we share as a community committed to theological education in service of the Hispanic Church.

At the Hispanic Theological Education Association, we affirm with conviction that theological formation is not a luxury, but a vital necessity for the flourishing of our faith communities. It is from this mission that every initiative, every program, every reflection, and every testimony you will find in these pages seeks to contribute to a Church that is more deeply rooted, more critically engaged, and more committed to its calling in the world.

This year, we celebrate with great enthusiasm our **35th anniversary** under the theme Roots and Horizons. This framework invites us to hold a dual vision: looking toward our roots, which ground us in faithfulness and memory, and toward the horizons before us, filled with possibilities to continue forming leaders who can respond with relevance and depth to the challenges of our time.

During this first quarter, we have witnessed tangible expressions of this mission in action. We celebrated the Anniversary of the book *Mañana* as an exercise in memory and theological imagination; we launched our **Lenten theological reflections series**, which concludes in this edition with the valuable contribution of Rev. Jeannette Salguero; and we continue to amplify voices that, from their contexts, embody theological work from the margins to the mission in the life of the Church.

The testimonies we share in this newsletter remain our strongest calling card. In them, we see the real impact of theological education when it is lived, practiced, and embodied in community.

We look ahead with great anticipation, especially as we prepare for our **2026 Biennial Gathering**, to be held October 15–17 in Decatur, Georgia, we are going back to where all began: Columbia Theological Seminary. This will be a key space to strengthen networks, deepen learning, and renew our commitment to theological formation for the Hispanic Church. **Registration is now open!**

We also encourage you to stay attentive to what is ahead in the coming months, and to continue enjoying the exclusive benefits of membership. Being part of this community is also a commitment to an ongoing process of formation, collaboration, and shared growth.

I invite you to engage each page of this edition with a critical mind, an open heart, and a spirit ready to continue learning. May this newsletter be not only informative, but also formative and inspiring.

Thank you for being part of this mission. Thank you for walking, learning, and building alongside us. #weareAETH

With gratitude,

Rev. Dr. Jessica Lugo

Executive Director of AETH

Association for Hispanic
Theological Education





CONTENT:

- 01** Letter from the Executive Director
- 03** Justo and Catherine González Resource Center
- 04** Join AETH, become a member
- 05** Young Líderes
- 06** Compelling Preaching *Intensive Weekend*
- 07** Compelling Preaching *Woman and Preaching*
- 08** Fundraising: Growing Together
- 09** Bienal 2026: Roots and Horizons *Early Bird Registration*
- 10** Bienal 2026: Roots and Horizons *Resources*
- 11** Lenten Campaign
- 12** 2025 Impact Report
- 13** New ECOS Podcast
- 14** AETH Bookstore



The Center has been actively engaged in several exciting events recently

In **January**, for the second year in a row, we had the privilege of hosting Dr. Tony Alonso's Candler School of Theology class on Latine theology during which the students, Dr. Justo González, and Dr. Catherine González engaged in lively conversation. The half-day event allowed the students to explore the offerings of the Center and to get to know ways in which we can support their work as they prepare for a variety of types of ministry.

In **February**, we had a wonderful turnout for the two-day gathering honoring the thirty-fifth anniversary of the publication of Dr. Justo González's groundbreaking book, *Mañana: Christian Theology from a Hispanic Perspective*. This event, co-sponsored by AETH/the González Center/Antioquía and Candler School of Theology, took place in Atlanta. The Center also hosted an Open House as part of the gathering, during which guests had an chance to visit with Justo and Catherine González, and we were able to highlight the work of the Center.

In **March** we will be hosting the first of several meetings for the Writing for Print Publication cohort, a group of four members of the Young Líders program chosen through a blind competition. They will work with Dr. Justo González over the course of a year to prepare manuscripts for publication proposals.

The Center continues to seek new opportunities to engage with churches and seminaries, fostering theological discussion and reflection.

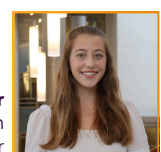
We are also thrilled to share that nearly 400 documents have been uploaded to our digital collection. Our team has been working diligently to streamline the process of digitizing and uploading the unpublished works of Dr. Justo González and Dr. Catherine González, as well as a few published works for which we have received permission. As a reminder, all AETH members and Friends of the Center now have access to this growing digital collection through their accounts.

If you are interested in learning more about the Center's work or exploring ways to participate with our team, we warmly invite you to become a Friend of the Center. Friends not only gain access to the digital collection but also receive monthly reflections and invitations to engage in dialogue on partnerships with local ministries and churches. To become a Friend or more information about the Friend's program, please click this link, <https://gonzalezcenter.org/friends-of-the-center>.

ACCESS OUR
RESOURCE PORTAL



Sophia Porter
Specialist of the "Friends of the Center" Program
Justo & Catherine González Resource Center





AETH is more than just an organization—it's a vibrant comunidad dedicated to fostering rigorous academic inquiry, spiritual formation, and impactful leadership within Hispanic theological education. We are a network of scholars, practitioners, and students committed to advancing theological discourse that speaks to the unique experiences and contributions of Hispanic peoples.

As an AETH member, you will unlock a world of exclusive benefits designed to enrich your theological work:



- **Vibrant Community and Unparalleled Networking Opportunities:** Connect with a powerful network of Hispanic scholars, educators, pastors, and theology students. Engage in enriching dialogues, forge lasting collaborations, and find mentorship in a supportive comunidad.

NEW



- **Exclusive Access to the Member Portal:** Your New Resource Space: A new resource space where AETH members can exclusively access articles, webinars, and other materials that will enrich their biblical and theological learning and growth. Visit today and immerse yourself in this treasure of knowledge designed to empower your work!



- **Exclusive Access to Premier Events:** Enjoy special member pricing at our annual conferences, regional meetings, and webinars—events designed to inspire, educate, and connect.



- **And much more...** Discover endless additional opportunities designed for your development!

Join a community that celebrates and cultivates the richness of Hispanic theological thought.

Visit www.aeth.org to learn more and become a member of our community or to renew your membership today!

AETH membership

Renew Membership



CONTACT US

membership@aeth.org

Dr. Marta Noemi Luna, EDD, MDIV
Associate Director for Capacity, Certification & Community



Compelling Preaching Intensive Weekend

Over nearly two years of ongoing presence in different churches, AETH has held a total of 12 training events. This was a medium-format intensive, presenting four main themes that addressed the needs of preaching today: Trauma, Ethics, Movement, and Incarnation. It also included lectures, conferences, and panels that are part of this experience aimed at growth and theological education with an emphasis on preaching.

#AETH #preachingtransformadora

PARTICIPANT TESTIMONIES

“Preaching, as a movement of life, is biblical, and the church is called to respond with service to the most pressing needs; for the community it is necessary to discuss immigration from a biblical perspective.”

“Preaching must first have an effect on the preacher—through prayer before, during, and after preaching.”

“From a theological perspective, God is a God in movement from Abraham to the times of Jesus and to today. Therefore, we must carry the gospel, aware of human rights, and as a community, the preaching message will leave a seed in all people.”

COMPELLING PREACHING WEEKEND INTENSIVES 2026

FEBRUARY



From the Margin to the Mission: Preaching as a Movement of Life

Donation: \$20 General Public \$10 AETH Members, CEBM Students and Alumni



SPEAKERS:

- Rev. Milca Rivera
- Dr. Wilmer Estrada Carrasquillo
- Alma Ruth
- Dr. Daniel Montañez

FEBRUARY 20-21, 2026
 FEB. 20 7-9 PM | FEB. 21 9 AM - 3 PM
 CENTRAL CHURCH OF GOD SAN ANTONIO, TEXAS
 BILINGUAL EVENT

ICLESIA Central
 GARRETT
 PREDICACION TRANSFORMADORA



“

“In the midst of times of change and movement, the Intensive Weekend Bilingual ‘From the Margin to the Mission’ was a breath of the Holy Spirit that gathered leaders and believers from Texas to Oklahoma to strengthen and consider the church and proclaim hope. Under the auspices of the Transformative Preaching program of AETH, it was an event that not only educates and trains, but also provides individuals with discernment, pastoral renewal, and sends them to fulfill the mission of God.” — Rev. Dr. José Daniel Montañez



Oscar Merlo, Ph.D., MBA, MAICS
 Program Consultant: Transformative Preaching and the National Initiative to Strengthen Hispanic Pastors, Leaders, and Congregations

SHORT COURSE: WOMEN AND PREACHING

"Women and Preaching" — Short Course (At Your Own Pace) Discover the biblical, historical, and pastoral voice of women in preaching.

Study whenever you can and from wherever you are — this fully asynchronous and self-paced course allows you to progress according to your own schedule while receiving deep tools for your ministry. **Enroll and start whenever you decide.**



La **CURSO CORTO** mujer y la predicación

"La mujer y la predicación" es un curso esencial que afirma el llamado, la voz y ministerio de las mujeres en el púlpito. **Explora fundamentos bíblicos, históricos y prácticos** que hacen de este tema una urgencia teológica y pastoral para la iglesia de hoy.

Incríbete en nuestra página



PROFESORAS:



REV. DRA. JESSICA LUGO
Directora Ejecutiva AETH



REV. LAURA AYALA
Coordinadora Global de Misiones
Cooperative Baptist Fellowship



REV. LORI TAPIA
Pastora Nacional
ICOC Obra Hispana



Sign up on our page

IMPACT IN ACTION

Women Bearing Fruit

Scripture reminds us:

“The wise woman builds her house.”

Proverbs 14:1

At AETH, we see this truth lived out in women who faithfully respond to the call to serve and lead in their communities. Some teach in Bible institutes.

Others walk alongside their congregations through seasons of growth and challenge.

Many are shaping new generations of disciples, sharing the wisdom they have received. What they all share is a deep conviction: leadership in the church requires formation, support, and community.

Through the spaces of learning, theological reflection, and collaboration that AETH fosters, women from diverse contexts are finding the tools they need to serve with greater clarity, confidence, and faithfulness.

Each woman who is formed becomes a seed that bears fruit in churches, families, and communities.

This work is possible because of people who believe in this mission.

Your donation helps more women receive the training and support they need to continue building with wisdom. Support the development of women’s leadership today.

<https://aeth.org/donate>

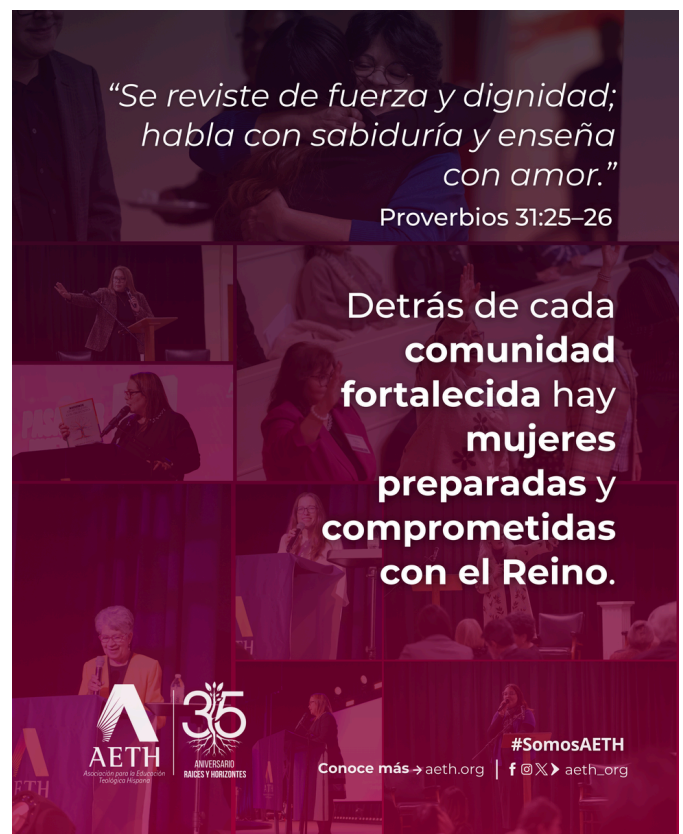
DONATE TODAY:
EDUCATING TO IMPACT, INSPIRING TO SERVE.



“Se reviste de fuerza y dignidad; habla con sabiduría y enseña con amor.”

Proverbios 31:25–26

Detrás de cada comunidad fortalecida hay mujeres preparadas y comprometidas con el Reino.



Conoce más → aeth.org | [f](#) [@](#) [X](#) [aeth.org](#)

#SomosAETH



Shaila Muñoz
Growth and Fundraising Consultant

Biennial 2026: Roots and Horizons

Early Bird Registration



March 2026 - Year 3 - Vol. 1



Bienal 2026

RAÍCES Y HORIZONTES

15 al 17 de octubre de 2026
Columbia Theological Seminary
Decatur, GA

REGÍSTRATE HOY

Aprovecha el
Descuento de
Early Bird y
regístrate hoy:



Conoce más → aeth.org | [aeth_org](https://twitter.com/aeth_org)

#SomosAETH

Recursos de la *Bienal*



ORADORES PRINCIPALES:



PROF. ANA M. CEPERO
ACADEMIA



DR. DANIEL RUARTE
IGLESIA



PROF. JEFFREY BAMACA
COMUNIDAD

TALLERISTAS:



DR. ALEXIA SALVATIERRA



DR. DANNY SANTIAGO



REV. DEBORAH ORTIZ



DR. ELIZABETH CONDE-FRAZIER



DR. FRANK YAMADA



DR. HAROLD SEGURA



LCDA. INGRID DELGADO



LCDO. JAVIER PEREZ



DR. JAVIER VIERA



DR. JUSTO GONZALEZ



DR. LESLIE DIAZ



REV. LORI TAPIA



DR. OCTAVIO ESQUEDA



DR. PHILIP DEARBORN



DR. RICHARD SERRANO

Participa de nuestra **Bienal** y se parte de la encrucijada entre la **Academia, Iglesia y Comunidad** donde aprendemos y somos transformados.

Conoce más aeth.org | [f](https://www.facebook.com/aeth.org) [i](https://www.instagram.com/aeth.org) [X](https://www.x.com/aeth.org) [y](https://www.youtube.com/aeth.org) [aeth.org](https://www.aeth.org)

#SomosAETH

Rooted at the Cross, New Horizons of Resurrection



Reverenda Jeanette Salguero

The Rev. Jeanette Salguero—pastor of the multicultural The Gathering in Orlando, FL, vice president of the National Latino Evangelical Coalition, and director of the Carrion Hispanic Leadership Institute at Southeastern University—is a leading voice on issues affecting Latino communities in the U.S., including immigration, education, and health. She has provided consulting to government agencies on minority health disparities and was recently recognized by the Department of Health & Human Services as one of the nation's top 15 women for her leadership with vulnerable populations. A sought-after speaker and published author on multi-ethnic leadership and Hispanic women's leadership, Jeanette holds a Master's in Leadership & Non-Profit Consulting (summa cum laude) from Southeastern University and is a graduate of Duke Divinity's Faith & Leadership Institute. She lives in Orlando with her husband, the Rev. Dr. Gabriel Salguero, and their two sons.

Lent returns us to the place where Christian faith is most clearly revealed: the cross.

The cross is not merely a symbol of personal devotion. It is a public event. It stands at the intersection of faith, power, suffering, and truth. Rome intended the cross to be a warning - a spectacle meant to silence those who threatened the order of empire. Yet in that very place, God reveals the deepest truth about the world.

The cross exposes what human power often tries to hide. It reveals how systems can crush the innocent. It shows how crowds can be manipulated, how leaders protect their interests, and how truth can be condemned in the name of order. The prophets spoke of this long before Golgotha. Amos cried out against those who “trample on the poor” and “sell the needy for a pair of sandals” (Amos 2:6-7). Isaiah rebuked those who “make unjust laws” and deprive the vulnerable of justice (Isaiah 10:1-2). At the cross, those prophetic warnings come fully into view.

Jesus does not suffer as an individual alone. He stands in solidarity with all who have been pushed to the margins of history. He becomes, as the prophet Isaiah foresaw, the one who is “despised and rejected... a man of sorrows, acquainted with grief” (Isaiah 53:3).

For many in our Latino congregations, this is not abstract theology. The cross speaks to communities that know what it means to carry burdens - immigrant families navigating uncertainty, workers whose labor is often unseen, young people searching for dignity and belonging. The cross reminds us that God does not stand far from these realities. God enters them.

But the cross does more than reveal suffering. It also reveals the radical love of God. Even as he is crucified, Jesus prays, “Father, forgive them” (Luke 23:34). The cross becomes the place where hatred meets mercy and where violence is confronted by sacrificial love.

To be rooted at the cross, then, is to allow that love to reshape our witness. The church cannot simply preach the cross; we must embody its solidarity. We must stand where Christ stands - with the poor, the overlooked, and the wounded of our cities and neighborhoods.

Yet the story does not end at the cross!

On the third day, the stone is rolled away. The resurrection announces that the powers that crucify do not have the final word. The God who raised Jesus from the dead is still bringing life where the world expects despair.

For the church today, especially for communities that know struggle, resurrection is not a distant promise. It is a living horizon. At the cross, we learn truth, humility, and courage. In the resurrection, we learn hope, imagination, and perseverance. Lent reminds us to hold these together.



READ HERE





nuevo
podcast

ecos



AETH
Asociación para la Educación
Teológica Hispana

TEMPORADA 4: Narrar para transformar: *Storytelling* con propósito en comunidad

Dr. Harold
Segura



#SomosAETH
Conoce más → aeth.org | [f](#) [@](#) [X](#) [▶](#) [aeth_org](#)



ANTIOQUIA
by AETH

SUBSCRIBE TODAY

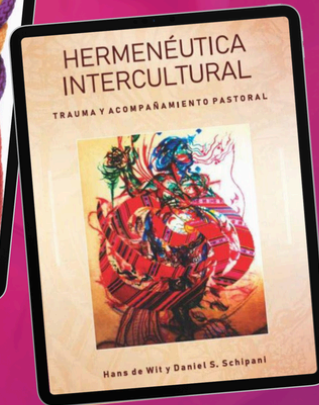
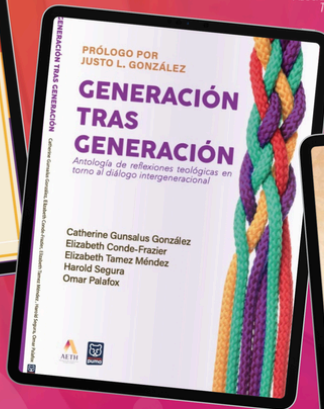
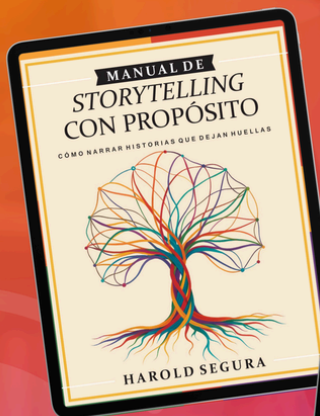


BOOK STORE



Visita nuestra librería y descubre tu próxima gran aventura literaria.

Conoce más → aeth.org | [f](#) [@](#) [X](#) [▶](#) [aeth_org](https://www.instagram.com/aeth_org)



LIBRERÍA DIGITAL DE AETH

Escanea el QR Code y conoce las nuevas riquezas literarias que te ofrecemos:



Conoce más → aeth.org | [f](#) [@](#) [X](#) [▶](#) [aeth_org](https://www.instagram.com/aeth_org)

#SomosAETH