



# 2026 Biennial ROOTS AND HORIZONS

# Sponsorships Opportunities

Learn more → [aeth.org](https://aeth.org) | [f](#) [@](#) [X](#) [▶](#) [aeth.org](https://aeth.org)

[#WeAreAETH](#)

# DEAR SPONSOR:

## AETH Biennial 2026 – Roots and Horizons

In October 2026, the Association for Hispanic Theological Education (AETH) will celebrate **35 years of service to the church and to Hispanic theological education**. This Biennial will be especially meaningful as we return to Columbia Theological Seminary in Decatur, Georgia, the place where AETH was first established. Under the theme *Roots and Horizons*, from **October 15–17, 2026**, we will gather pastors, educators, theological institutions, and ministry organizations to celebrate our shared history and to look together toward the future of Hispanic theological education.

We invite you to consider the sponsorship opportunities to become part of this historic celebration. Because of the special nature of this anniversary gathering, **sponsorship opportunities will be limited and confirmed on a first-commitment basis**.

Three reasons to participate as a sponsor:

- **Strategic visibility** before a national network of leaders, theological institutions, and ministries committed to the formation of the Hispanic Church.
- **Meaningful connection** with a community of educators, pastors, and ministry leaders who are shaping Christian leadership across the United States and Latin America.
- **Participation in a historic celebration**, commemorating the 35th anniversary of AETH in the very place where this mission began.

It would be a privilege to have your organization join us in this gathering as we celebrate our roots and open new horizons for theological formation and service.

Learn more → [aeth.org](https://aeth.org) | [f](#) [@](#) [X](#) > [aeth\\_org](#)

#WeAreAETH



**2026 Biennial**  
ROOTS AND HORIZONS



# 2026 Biennial ROOTS AND HORIZONS

# Sponsorships Opportunities >>

Learn more → [aeth.org](https://aeth.org) |    → [aeth.org](https://aeth.org)

#WeAreAETH

# DIAMOND



**INVESTMENT: \$4,500**  
**AVAILABLE: 2**

✓ **360 VISIBILITY, MAIN PRESENCE AND COMPREHENSIVE VISIBILITY THROUGHOUT THE BIENNIAL EXPERIENCE**

✓ **DESIGNED FOR INSTITUTIONS SEEKING VISIBLE LEADERSHIP AND A DIRECT CONNECTION TO THE MISSION AND COMMUNITY.**

This level offers an exclusive position as the lead sponsor, featuring a premium table, exclusive lunch sponsorship, a one-minute promotional video, and maximum exposure across key event touchpoints.

## INCLUDES:

- Preferentially located exhibit table
- 4 in-person event registrations
- 15 virtual access passes + post-event recordings (logo included in digital content and recordings)
- Featured prominent logo on the website
- Featured logo in the program
- Back cover full-page ad in the program
- Featured logo included in the rotating presentation of the event, projected on screens during breaks and lunches.
- One-year institutional membership
- Mention in press release
- Exclusive lunch sponsorship (includes a 3-minute institutional greeting and logo on screen)
- 1-minute promotional video
- 2 dedicated social media posts
- 1 individual verbal recognition during the event
- Featured logo in 2026 Impact Report
- Logo displayed in workshop area signage

Learn more → [aeth.org](https://aeth.org) | [f](#) [@](#) [X](#) > [aeth\\_org](#)

#WeAreAETH



# PLATINUM



**INVESTMENT: \$3,500**  
**AVAILABLE: 2**

✓ **360 VISIBILITY, VISIBLE PRESENCE AND ACTIVE PARTICIPATION IN THE BIENNIAL EXPERIENCE**

✓ **DESIGNED FOR INSTITUTIONS SEEKING A WELL-POSITIONED AND MEANINGFUL PRESENCE WITHIN THE COMMUNITY.**

This level offers a strategic presence with advertising in the digital program, screen exposure, and break sponsorship. A balanced option with a clear institutional impact.

## INCLUDES:

- Preferentially located exhibit table
- 3 in-person event registrations
- 10 virtual access passes + post-event recordings (logo included in digital content and recordings)
- Featured logo on website
- Featured logo in program
- Full-page ad in the program (interior placement)
- Featured logo included in the rotating presentation of the event, projected on screens during breaks and lunches.
- One-year institutional membership
- Mention in press release
- Coffee Break Sponsorship (verbal acknowledgment and sponsor recognition, logo displayed on screen)
- 30-second promotional video
- 1 dedicated social media post
- 1 individual verbal recognition during the event
- Featured logo in 2026 Impact Report
- Logo displayed in workshop area signage

Learn more → [aeth.org](https://aeth.org) | [f](#) [@](#) [X](#) > [aeth\\_org](#)

#WeAreAETH



# GOLD

**INVESTMENT: \$2,500**  
**AVAILABLE: 3**



## ✓ IN-PERSON PARTICIPATION WITH STRATEGIC VIRTUAL ACCESS

This level offers meaningful on-site presence and visibility during the event. It offers an accessible opportunity for institutions seeking clear and measurable outcomes.

### INCLUDES:

- On-site exhibit table
- 2 in-person event registrations
- 5 virtual access passes + post-event recordings
- Logo on the website
- Logo in the program
- Half-page ad in the event program

Learn more → [aeth.org](http://aeth.org) | [f](#) [@](#) [X](#) [aeth\\_org](#)

#WeAreAETH



# SILVER

**INVESTMENT: \$1,500**  
**AVAILABLE: 3**



## ✓ IN-PERSON PARTICIPATION WITH INSTITUTIONAL VIRTUAL ACCESS

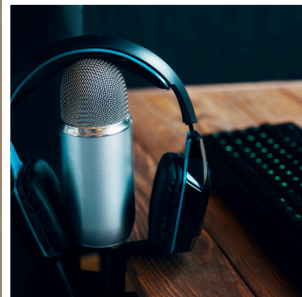
This level provides on-site participation along with virtual access during the event. It offers an accessible opportunity for institutions to be present and connect with attendees.

### INCLUDES:

- On-site exhibit table
- 2 in-person event registrations
- 3 virtual access passes + post-event recordings
- Logo on the website
- Logo in the program

Learn more → [aeth.org](http://aeth.org) | [f](#) [@](#) [X](#) [aeth\\_org](#)

#WeAreAETH



# DIGITAL CONNECTION



**INVESTMENT: \$1,000**  
**AVAILABLE: 3**

## ✓ STRATEGIC DIGITAL VISIBILITY WITHOUT IN-PERSON PARTICIPATION.

This level includes an advertisement in the digital program and a dedicated social media post. Ideal for institutions seeking a national presence without physical logistics.

### INCLUDES:

- 5 virtual access passes + post-event recordings
- Logo on the website
- Logo in the program
- Quarter-page ad in the program
- Logo displayed on event's screen (special acknowledgment)
- 1 Dedicated social media post
- 1 Collective verbal acknowledgment
- Logo included in 2026 Impact Report

#### DIGITAL ADD-ON OPPORTUNITY\*

For an additional \$250 USD, enhance your sponsorship by including:

- A 30-second video, or
- A promotional slide

\*Your content will be displayed during **Zoom session breaks throughout all three days**, reaching an audience of **100+ virtual participants**, including leaders and institutions connected to AETH's network.

\*This add-on opportunity applies exclusively to digital sponsorship packages.



# DIGITAL ALLY



**INVESTMENT: \$500**  
**AVAILABLE: 4**

## ✓ BASIC DIGITAL PARTICIPATION WITH RECOGNITION IN OFFICIAL EVENT MATERIALS AND DIGITAL PLATFORMS. AN ACCESSIBLE WAY TO SUPPORT AETH'S MISSION.

This level offers an accessible way for organizations to support AETH's mission while maintaining a visible presence within the Biennial community.

### INCLUDE:

- 2 virtual access passes + post-event recordings
- Logo listed on the event website and program
- Logo displayed on screens (collective acknowledgment)
- 1 group social media post

Learn more → [aeth.org](https://aeth.org) | [f](#) [@](#) [X](#) [v](#) [aeth\\_org](#)

#WeAreAETH

Benefits / Level	Diamond (360° Visibility – Full In-Person & Digital Presence)	Platinum (360° Visibility – Full In-Person & Digital Presence)	Gold (In-Person Participation)	Silver (In-Person Participation)	Connection (Digital Participation & Presence)	Digital Ally (Digital Presence)
Packages Available	2	2	3	3	3 (Approx.)	4 (Approx.)
Investment	\$4,500	\$3,500	\$2,500	\$1,500	\$1,000	\$500
Exhibit Table	1 Premium	1 Premium	1	1	—	—
Event in Person Registrations	4	3	2	2	—	—
Virtual Access Passes	15	10	5	3	5	2
Access to recordings* <small>(*Logo Included in digital content in Diamond and Platinum packages)</small>	✓*	✓*	✓	✓	✓	✓
Exclusive Sponsorship (Diamond and Platinum)* <small>See package descriptions for details.</small>	Lunch*	Coffee Break	—	—	—	—
Logo on Event website	Primary Featured	Featured	✓	✓	✓	✓
Logo in Program	Featured	Featured	✓	✓	✓	✓
Logo on Event Screens	Featured	Featured	Rotating	Rotating	Special Recognition	Collective Recognition
Biennial Program Advertisement	Full Page - Back Cover	Full Page Interior	1/2 page	1/4 page	1/4 page	—
Logo in workshop area signage	✓	✓	—	—	—	—
One-Year Institutional Membership	✓	✓	✓	—	—	—
Mention in Press Release	✓	✓	—	—	—	—
Promotional Video / Media	1 minute	30 seconds	—	—	—	—
Verbal Recognition during the event	Individual	Individual	Collective	Collective	Collective	—
Social Media Recognition	2 Dedicated Post	1 Dedicated Post	Group Post	Group Post	Dedicated Post	Group Post
Logo in 2026 Impact Report	Featured	Featured	Logo	Logo	Logo	—

# KEY TERMS AND INSTRUCTIONS

- Full payment must be issued on or before **July 30, 2026**.
  - a.Sponsorship benefits will be activated once payment has been received.
  - b.Sponsorship opportunities are **limited** and will be confirmed based on order of commitment and receipt of payment.
- The **Early Bird** offer is valid until **June 30, 2026**.
- Once payment has been completed, please submit your organization's logo in PNG format (high resolution, transparent background).
- Artwork for digital program advertisements and promotional videos (when applicable) must be submitted on or before **August 15, 2026**.
- Artwork for social media posts must also be submitted on or before **August 15, 2026**.

## Important Notice

If payment is received on the **final deadline (July 30, 2026)**, all materials required for the sponsorship package; including logos, graphic artwork, advertisements, videos, and any other applicable content, must be submitted on the same day in order to guarantee their inclusion in the event materials.

AETH cannot guarantee the inclusion or execution of certain sponsorship benefits if the required materials are not received within the established deadlines.

The organization reserves the right to adjust or limit promotional benefits if materials are submitted after the specified deadlines.

For questions or additional information, please contact:  
smunoz@aeth.org or info@aeth.org.



# 2026 Biennial

## ROOTS AND HORIZONS

# Sponsorship Guidelines and Important Datelines



Learn more → [aeth.org](https://aeth.org) | [f](#) [@](#) [X](#) [▶](#) [aeth\\_org](#)

#WeAreAETH

## 1. INSTITUTIONAL LOGO SUBMISSION

Once the sponsorship package has been paid in full, the organization's official logo must be submitted in:

- **Format:** PNG
- **Resolution:** High resolution
- **Background:** Transparent preferred
- **Website link:** Send the official website link of the entity

Logos should be sent **immediately after payment confirmation** to ensure inclusion in the event's promotional materials.

## 2. DIGITAL PROGRAM ADVERTISEMENT SPECIFICATIONS

Please note that the **Biennial program will be distributed in digital format only and will not be printed.**

Advertisement artwork must be submitted in high-resolution PDF or PNG format (300 dpi recommended) using the following sizes:

<b>Advertisement Size</b>	<b>Dimensions</b>
Full Page	8.5 × 11 inches
Half Page	8.5 × 5.5 inches
Quarter Page	4.25 × 5.5 inches

**Submission deadline:** August 15, 2026.

If artwork is not received by the deadline, AETH cannot guarantee inclusion in the final digital program.

### 3. PROMOTIONAL VIDEO SPECIFICATIONS (APPLICABLE PACKAGES)

Videos must be submitted in the following format:

- **Format:** MP4
- **Resolution:** 1920 × 1080 (Full HD)
- **Orientation:** Horizontal (16:9)
- **Maximum file size:** 200 MB

Video length must correspond to the specifications of the selected sponsorship package.

**Submission deadline:** August 15, 2026.

### 4. SOCIAL MEDIA GRAPHIC SPECIFICATIONS

Graphics for dedicated social media posts must meet the following requirements:

- **Size:** 1080 × 1080 pixels
- **Format:** PNG or JPG
- **Color Mode:** RGB
- **Resolution:** Minimum 150 dpi

**Submission deadline:** August 15, 2026.

If artwork is not received by the deadline, AETH may create the post using the organization's institutional logo.

### 5. FILE SUBMISSION

All sponsorship materials should be sent to:

**smunoz@aeth.org and copy to info@aeth.org**

Files larger than 20 MB may be shared through:

- Google Drive
- Dropbox
- WeTransfer

Sponsors will receive confirmation of receipt within **2-3 business days**.

Learn more → [aeth.org](https://aeth.org) | [f](https://www.facebook.com/aeth_org) [@X](https://twitter.com/aeth_org) [aeth\\_org](https://www.instagram.com/aeth_org)

#WeAreAETH



## 6. GENERAL GUIDELINES

All submitted materials must meet **professional quality standards**.

AETH reserves the right to make minor formatting adjustments to maintain visual consistency across event materials.

AETH also reserves the right to request modifications or decline materials that do not align with the mission, tone, or standards of the event.